

The TZ-105 Column Speaker employs multiple cone speakers arranged vertically on a single baffle board to provide wider horizontal directivity.

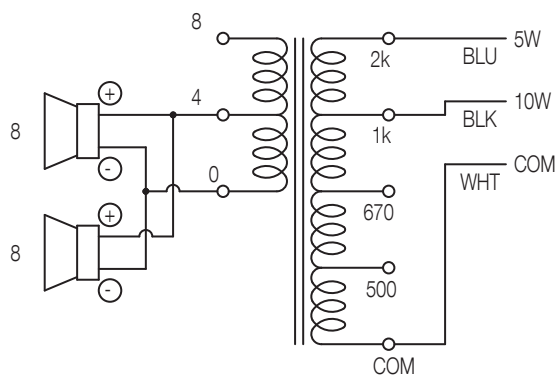


Order no: TZ-105 EX  
Alternative products: BS-1110W, BS-1120W

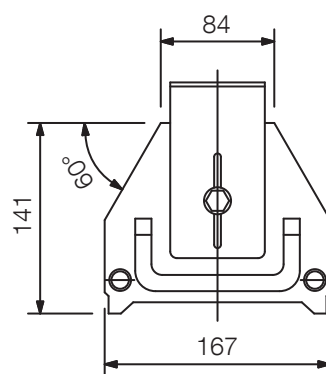
## Specifications

Frequency response	150 Hz - 10 kHz
Sensitivity (1#V, 1#n) (combined)	90 dB
Speaker component	12 cm cone-type x 2
Rated input	10 W
Tappings	100V line: 1k $\Omega$ (10W), 2k $\Omega$ (5W)
Dimensions (W x H x D)	167 x 334 x 141 mm
Dimensions ( $\phi$ x D)	x 141 mm
Finish	Aluminium, fully-glazed, paint, white aluminium (RAL 9006 or equivalent), black

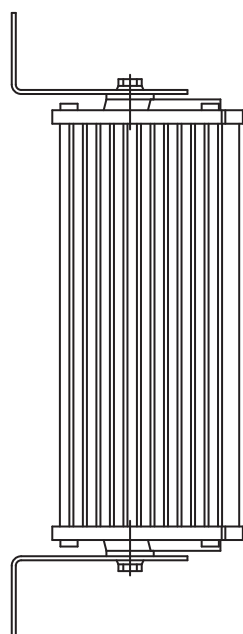
## Appearance



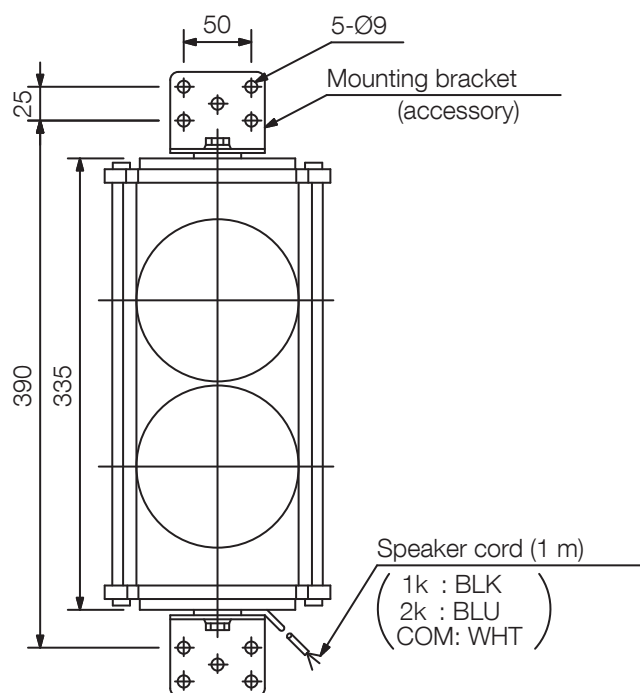
Wiring Diagram



Top View



Side View



Front View

UNIT:mm

SCALE:1/6